

## FACT SHEET

### 2Q15

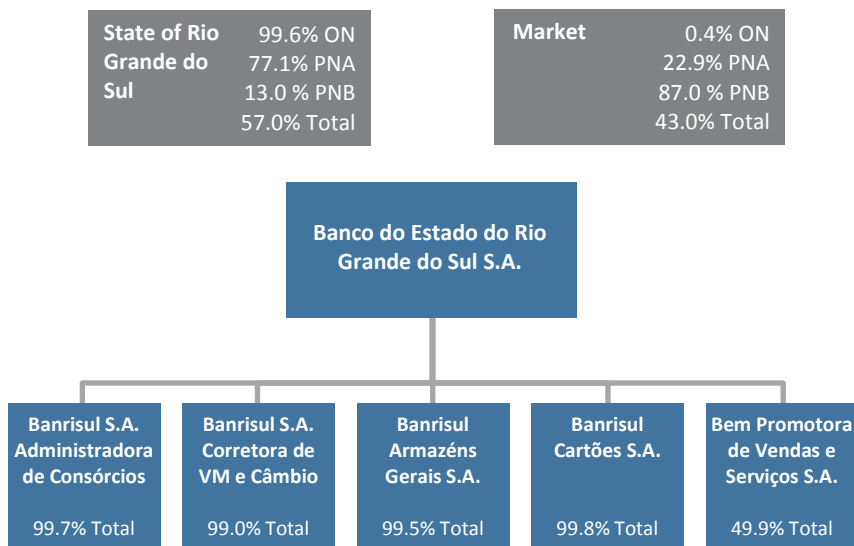
#### CORPORATE PROFILE

Founded in 1928, Banco do Estado do Rio Grande do Sul S.A. is a multiple-service bank controlled by the State of Rio Grande do Sul, with strong penetration among the population of the state that strengthens its identity as a regional bank.

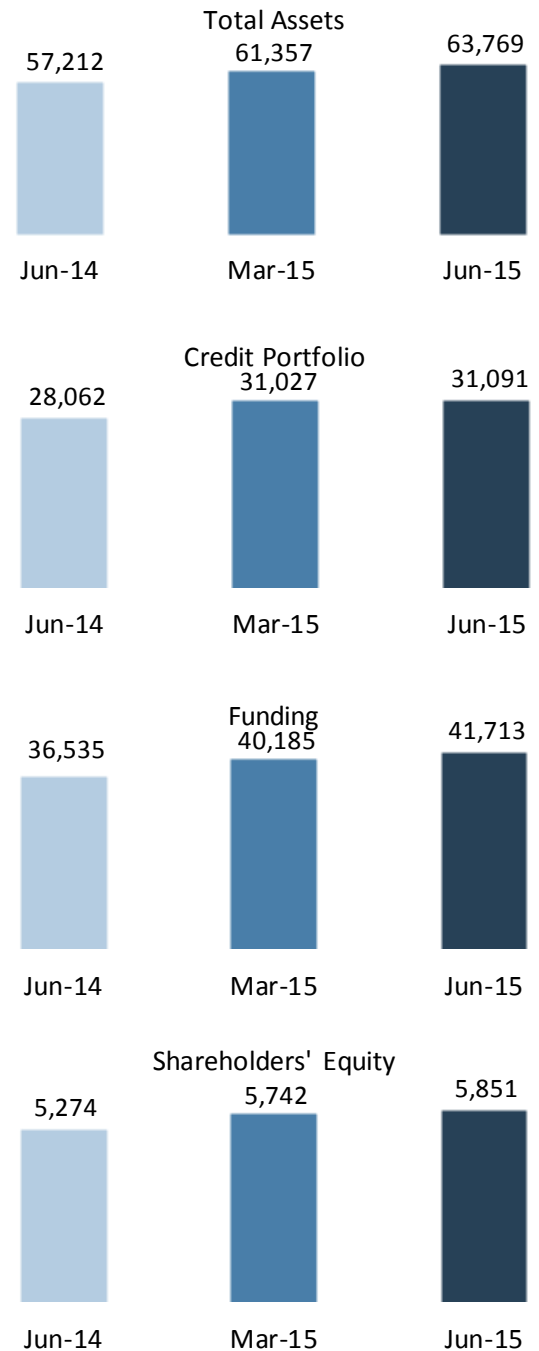
#### STRATEGY

- Growth of Banrisul's loan portfolio in a prudent and sustainable manner while maintaining sound levels of profitability
- Consolidate and maintain its leadership position in Rio Grande do Sul.
- Strengthen Banrisul's relationship with state governmental agencies and consolidate its presence in the public sector.
- Invest in technology to reduce costs, obtain economies of scale, promote productivity and expand the range of products offered.

#### CORPORATE STRUCTURE



#### INDICATORS



#### BANRISUL'S SERVICE NETWORK

**1,309** Service Network  
**534** Branches  
**206** Service Posts  
**569** Electronic Service Points

Rio Grande do Sul: **485** Branches  
 Santa Catarina: **30** Branches  
 Other States: **13** Branches  
 Abroad: Miami and Cayman Islands



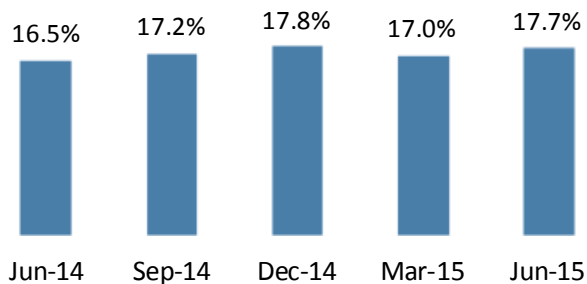
## INCOME

|                               | 2Q15   | 2Q14  | Change   |
|-------------------------------|--------|-------|----------|
| Adjusted Net Income           | 192.9  | 222.7 | -13.4%   |
| NII                           | 1088.1 | 942.9 | 15.4%    |
| Operational Income            | 293.5  | 168.9 | 73.8%    |
| Efficiency Ratio <sup>1</sup> | 53.0%  | 55.9% | -2.9 pp. |
| Return on Equity <sup>2</sup> | 14.0%  | 18.2% | -4.2 pp. |

Revenue Composition



## BASEL RATIO



## GUIDANCE

### Guidance 2015

|  |             |
|--|-------------|
| Credit Portfolio                             | 7% a 11%    |
| Commercial Credit - Individuals              | 8% a 12%    |
| Commercial Credit - Companies                | 6% a 10%    |
| Real Estate Loans                            | 9% a 13%    |
| Provision Cost/Credit Portfolio              | 2,5% a 3,5% |
| Allowance for Loan Losses/Credit Portfolio   | 5,5% a 6,5% |
| Funding                                      | 10% a 14%   |
| Ajusted Return on Shareholders' Equity       | 14% a 17%   |
| Efficiency Ratio                             | 52% a 56%   |
| Net Financial Margin/Interest-Earning Assets | 7% a 8%     |

## CORPORATE GOVERNANCE

Listed on BM&FBovespa (Brazilian Securities and Derivatives Stock Exchange) Corporate Governance Level 1, Banrisul fully meets the requirements of its listing level and other corporate governance's requirements as well, in line with best market practices, on behalf of greater transparency, fairness and proper accountability, while enhancing credibility and the interest of investors and customers.

Since early 2008, the Bank has established quarterly payment of interest on equity, and historically has remunerated its shareholders by paying interest on capital and dividends above the minimum level required.

At the end of the first quarter of 2014, net of income tax withheld at source, R\$62.2 million were paid and/or provisioned for as interest on capital and dividends.

## SUSTAINABILITY

For the Bank, sustainability is the strategic part of the business. It is a management practice that works for the best results, always seeking to improve the well-being of its customers, employees, suppliers, contractors, society, government and the environment. It is a constant concern in all actions and programs adopted by Banrisul, recycling of ideas and attitudes.

The Bank is an agent enabler of community initiatives, valuing and supporting attitudes that impact on the quality of the community. Confirming its historic commitment to society, promotes social development through projects in education, culture, sports and environment.

## LISTING

IGC  
IBRX  
ITAG  
SMLL

IFNC  
IDIV  
IGCT  
IBRA



## CONTACT IR

Alexandre Pedro Ponzi  
Head of IR  
Cássio Zimmermann  
IR Manager

Bibiana Barbosa  
Felipe Guarise  
Fernando Manica

Phone: +55 (51) 3215.3232 • E-mail: [ir@banrisul-ri.com.br](mailto:ir@banrisul-ri.com.br)

FACT SHEET | 2Q15

Economic and Financial Indicators in R\$ Million.  
1. Efficiency Ratio – 12 months. Personnel Expenses + Other Administrative Expenses/Financial Margin + Revenue From Services Rendered + (Other Operating Income - Other Operating Expenses).  
2. Return on Equity – 12 months.

